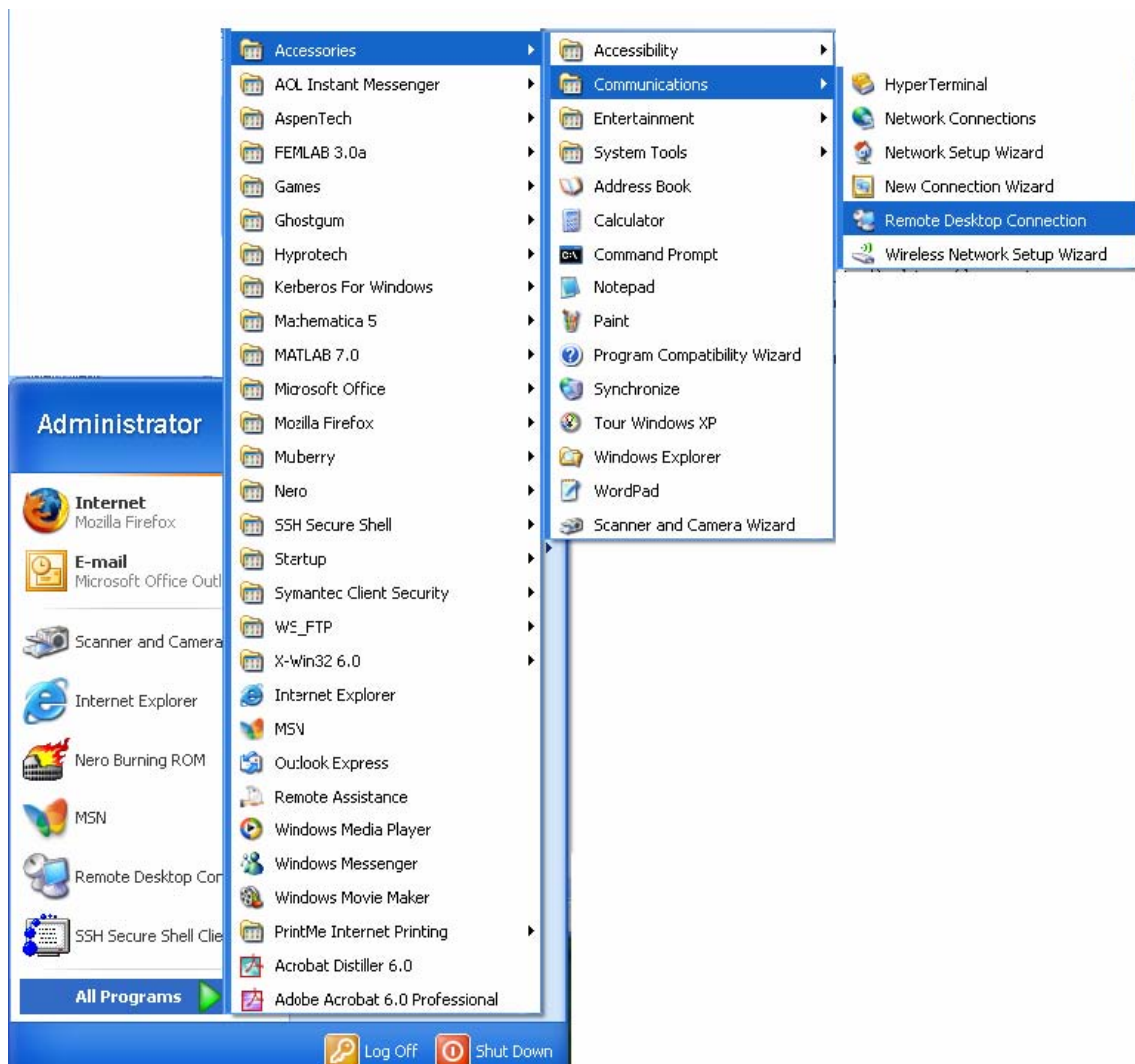


Connecting with Remote Desktop

The Chemical Engineering Department is now supporting a different way to utilize the cluster's services. By using a Remote Desktop Connection, you will be able to connect to and use the Chemical Engineering Cluster's software from dorms, off-campus apartments and other campus cluster computers. You will be able to print from anywhere to the cluster printers as well as from the cluster to a remote printer.

- 1 Click start, mouse to All Programs, then Accessories, then Communications then Remote Desktop Connection.
- 2 Click on Remote Desktop Connection.



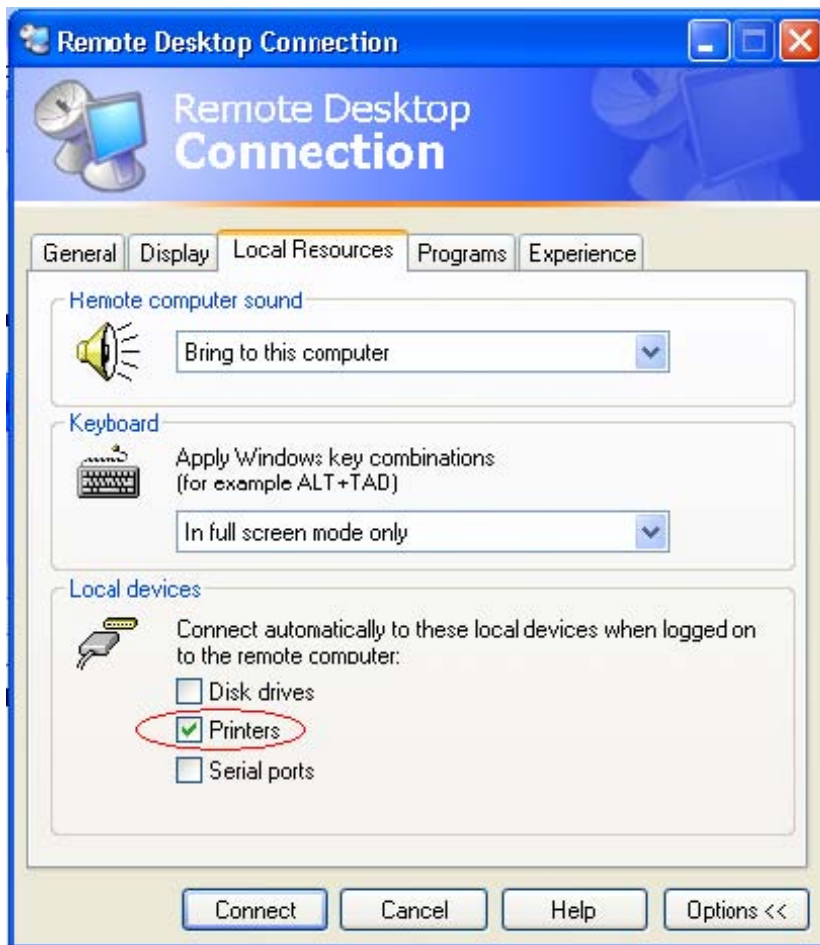
3. Type `blade.cheme.win.cmu.edu` into the box as shown below.



- 1 Click on the Options button.
- 2 Under the General tab, enter your Chemical Engineering username and password as shown below.



6. Click on the Local Resources tab. Check the Printers box as highlighted below.



7. Click on the Connect button. You will briefly see a login screen. Shortly, your desktop will appear as though you're in the cluster.