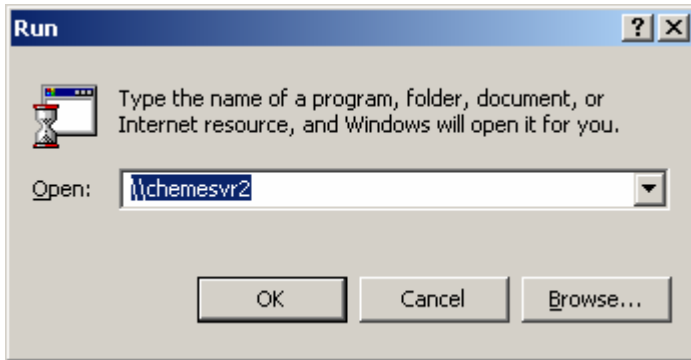


Certain software packages are available to all members of the campus community. For your convenience, many of these software packages are stored on chemesvr2 which can be accessed from any Windows NT / 2000 / XP machine. Downloading these software packages directly from chemesvr2 eliminates the need for an installation CD.

Part One: Connecting to chemesvr2

1. Click start and then click run.
2. Type “ \\chemesvr2 ” into the box as shown below.



3. You will be prompted with a box titled “Enter Network Password” as shown below.



4. In the “Connect As” box type “ cheme\‘cheme username’,” replacing cheme username with your own cluster username.
5. In the “Password” box type your cluster password as shown below.



6. If you have done this correctly, a window titled “chemesvr2” will open.

Part Two: Finding and installing software

1. Double click on the “Software” folder.
2. Double click on the “Table of Contents” text file.
3. Find the location of the software you need
4. Navigate to this location and follow the installation instruction to install the software.